

# ***Beverley District High School P&C***

## ***Meeting Minutes***

Tuesday, 5<sup>th</sup> June, 2018  
6-30pm – 8-30pm

Type of Meeting: General Meeting

Meeting Chair: Bruce Kilpatrick

Attendees: Bruce Kilpatrick, Carissa Shaw, Jodie Bell, Wendy Moore, Mari Tita, Lyndon Wallace, Tim Elsegood

Apologies: Aliesha Murray, John Hawke, Kristy Parker

I. Opening of Meeting @ 6-35pm

II. Approval of minutes from last meeting

- Moved- Wendy Moore
- Seconded- Carissa Shaw

III. Correspondence In- As per correspondence book

IV. Correspondence Out- Thankyou Cards to Beverley IGA and Beverley Pharmacy for Open Day raffle donations

V. Treasurer's Report- Not Available

VI. Principal's Report

- Disco for students on Thursday towards end of term being organized by student leaders
- Shrek Production going along well with thanks to Aliesha Murray and Kelly Fitzgerald
- Secondary students very keen on idea of a secondary hangout area- Chaplain Chris Footer has worked with students on this and has suggested a climbing wall, boxing bag, trampoline, tables and climbing ropes- to be positioned under roof area of red shed. Chris has been requested to bring these ideas with some costings to the next meeting.
- Interschool Cross Country- Issues with re-scheduling of events- feedback to go back to the association
- Assembly Week 8- All welcome
- New Kindergarten enrollments are now open.

VII. Sub-Committee Reports

- a) Canteen- See attached report for Meeting between Wendy, Aliesha, Mari, Bruce and Jo. A proposed Term 3 menu is also attached.

- As Tegan is unavailable to run the canteen this Friday (8/6), Jo was happy to run a 'pop up' canteen, trialing one recess and one lunch item from the proposed Term 3 menu. Mari will confirm availability of plastic bowls and spoons and advise Tegan of this arrangement. The school will advertise via Connect, Paper Notices and Facebook and Tracey Fleay will collate orders on Thursday morning.
- Discussion around the plans for Term 3 Canteen. It was agreed that this would be a Term 3 trial to see how it goes. Jo is very enthusiastic, and Friday will give her a good opportunity to see how the canteen operates at Beverley. Beverley Home Church are committing a \$50 donation per week to the canteen, to assist with affordability for all students. Canteen day will change to Wednesday. Things that need to be finalized-
  - Has the proposed menu been submitted to WA Canteen Association?
  - Costings for the menu items
  - Who will collate the orders (Wendy advised that this is a 1-2 hour job)
  - Who will organize parent roster to assist Jo with the aim to allocate each Week of the canteen to a different Year Level.
- Sharlee Higgins was approached regarding joining the P&C as the Canteen Rep- Declined. Mari is currently still available to assist however we need to follow this up for someone to assist/take over from her.

b) Uniform Shop

- Kerry-Anne has ordered hats.
- Need the name of the previous uniform supplier for the emblem- Tim should be able to locate in Treasury records and pass on to Jodie.
- Lots of uniforms sold recently with new students starting.

c) K-PP Committee

- Hot-Dog day next Wednesday, 13<sup>th</sup> June.
- A cheaper alternative for the Pre-Primary Mat has been sourced- this was approved by the P&C Committee.

## VIII. New Business

- a) Cakes Stall/Wood Raffle/Lime Cordial Fundraiser- Raised over \$2000. Thank you to parents to be put in the school newsletter, and a card to be sent to Ted Sampson who lent his trailer for the wood raffle.
- b) Entertainment Books- This has been set up and notes distributed to all students regarding how to purchase.
- c) Musical Quiz Night- Carissa has booked the hall. Narelle, Sally Kilpatrick and Emma Davey will write the quiz and Damien Murray and Brett Shaw will host the evening. It has been advertised in the Blarney. Wendy happy to coordinate the creche with a movie and some games. Need to check what heating will be required in the Lesser Hall. Bruce will approach Hotel Beverley in regards to prizes for the winning table.

We will need to allocate key people to coordinate getting tables together. Further advertising in the July Blarney as well as newsletters and Facebook next Term.

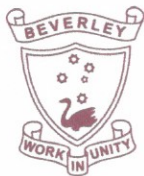
- d) Cash Flow Manager Software for P&C Financials- We still have access to this software so we continue to use.
- e) Battery Drive- Bruce will look at organizing after the Music Quiz Night. He has spoken to someone who will pay \$15 for truck batteries and \$7 for car batteries.

IX. Adjournment at 7-45.

Next Meetings:        Tuesday, 26<sup>th</sup> June at 6-30pm

                              Tuesday, 17<sup>th</sup> July at 6-30pm.





# Beverley District High School

## Independent Public School

20 John St Beverley|9646 1165|beverley.dhs@education.wa.edu.au

## P&C Canteen Meeting Minutes

*Meeting 1: Wed 30 May 2018*

**Expected attendees:** Bruce Kilpatrick (P&C President), Mari Tita (Canteen Committee), Jo Rose (Proposed new Canteen Coordinator), Wendy Moore (Principal) and Aliesha Murray (Deputy Principal)

**Minutes:** Aliesha Murray (Deputy Principal)

9.00am

- Jo Rose in collaboration with Shirley Julie Wallis have proposed that Jo as a part of her church group and outreach program, become the new Canteen Coordinator at Beverley DHS.

### **PROPOSAL**

- A commitment of \$50 from her church group would help to cover costs each week
- Canteen would be changed to a Wednesday
- Jo would like orders to be in on Monday (written on a brown paper bag) so she can collate them and then shop and cook (in the canteen) using wholesome ingredients on Tuesday and then serve the students on Wednesday.
- Late orders on Wednesday will be catered for but the students may not be able to have their choice of food.
- Jo would like them to eat on non-disposable plates with knives and forks at a table with table cloths.
- Jo would then do the washing up and any students who might like to help can do so.
- Jo put forward recipes that she would cook in the canteen – fully home cooked options (Mari to type) Aliesha to put into Menu format for the P&C to submit for approval from Canteen WA.
- Jo would like to run some POP-UP Canteen days as fundraising for the P&C with a different menu/different day.

Wendy  
Moore

### **PROPOSAL Response**

#### **POSITIVES**

- The prospect of having a home cooked menu is appealing
- The P&C and school are very appreciative of Jo's commitment of her time to volunteer to run the canteen
- The P&C or school does not have a preference of day for the canteen – any day is fine.
- The school will be happy to trial a pre-order system
- The P&C will continue to organize a parent helper per week to be involved in the preparation and serving on Wednesday.

#### **CHALLENGES**

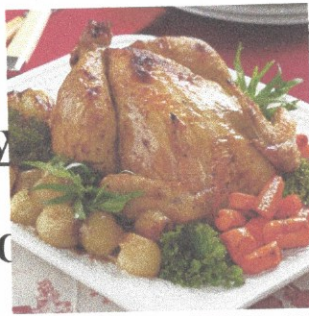
- Plates and knives and forks are not an appropriate option for school – dangerous, hard to manage for students, transport lunches to Pre Primary? Can we look at an environmentally friendly disposable option.
- The school does not have table seating, cloths, cutlery or plates for students to eat at/with. This is not a school focus and we do not have the means or staff to implement this.
- The students have minimal time for lunch and this process needs to be efficient for the students to eat their lunch and then go out to play. Is this going to be an efficient method of serving etc.
- There are a lot of options on the menu, both the school and P&C Committee are concerned with being able to provide all of the options every week. A rotational menu was suggested. Aliesha to propose ready for submission to Canteen WA.

### **FINAL Conclusions**

- Aliesha to type up menu
- Mari to type up Recipes and organise menu submission to Canteen WA
- Information regarding this meeting and the proposal is to go to the next P&C Meeting for final discussion on 5<sup>th</sup> June 2018.

10.00am

**Meeting close**



istrict High School

Year 14teen Term 3 2018

Our new HOC menu starts Term 3

(PRE-ORDER MONDAY)

### Recess Snacks

Toasted Cheesy (G)	\$
Cheese Scone (G)	\$
Mini Sausage Roll (A)	\$
Fruit Loaf (G)	\$
Vegetable Stick (G)	\$
Fruit (G)	\$
Apple slinky (bring your own apple) free	\$1.00

### Drinks

100% Juice (A)	\$1.70
----------------	--------

Apple, Orange, Tropical

Hot Milo (A)	\$1.00
--------------	--------

\*Please contact the school for any suggestions regarding our canteen

### Lunches

Chicken Legs and Roasted Vegetables	\$
Roast Beef and Roasted Vegetables	\$
Crumbed Crispy Chicken or Beef strips with Roasted Vegetables or salad	\$
Chicken Soup	\$
Chicken and vegetable soup	\$
Chicken or Beef Pie	\$
Homemade chicken or beef and vegetable pie.	\$
Spaghetti Bolognaise	\$

**Hamburger**  
Made with fresh homemade patties and salad in a fresh bakery bun.  
(Salad lettuce, carrot & tomato)

Hot Roast Beef and Gravy Roll \$

Chicken & Vegetable Pizza \$

Beef and Vegetable Pizza \$

**Sandwiches & Rolls (G)**  
Sandwiches available in hi-fiber white, rolls

	Sandwich	Roll
Vegemite	\$2.00	\$2.50
Cheese	\$3.80	\$4.50
Roast Chicken	\$3.80	\$4.50
Roast Beef	\$3.80	\$4.50
Egg	\$3.80	\$4.50
Salad	\$3.80	\$4.50

Extra fillings – cheese, beetroot etc .50c

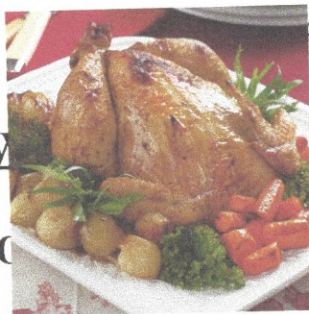
**Toasted sandwiches (G)**

1 Filling:	\$3.80
2 Fillings	\$4.20
3 Fillings	\$4.50

Fresh rolls brought from bakery daily.

### Traffic Light System

- (G) Green Item - Healthy
- (A) Amber Item - Occasional Food



istrict High School

Year 11 & 12 Canteen Term 3 2018

Our new Home Cooked Menu starts Term 3

(PRE-ORDER MONDAY)

### Recess Snacks

Toasted Cheesy (G)	\$
Cheese Scone (G)	\$
Mini Sausage Roll (A)	\$
Fruit Loaf (G)	\$
Vegetable Stick (G)	\$
Fruit (G)	\$
Apple slinky (bring your own apple) free	\$1.00

### Drinks

100% Juice (A)	\$1.70
Apple, Orange, Tropical	
Hot Milo (A)	\$1.00

\*Please contact the school for any suggestions regarding our canteen

### Lunch SPECIALS

#### ODD WEEKS

(Week 1, 3, 5, 7 & 9)

Chicken or Beef Pie \$  
Homemade chicken or beef and vegetable pie.

Hot Roast Beef and Gravy Roll \$

Spaghetti Bolognaise \$

#### EVEN WEEKS

(Week 2, 4, 6, 8 & 10)

Chicken & Vegetable Pizza \$

Beef and Vegetable Pizza \$

Hamburger \$  
Made with fresh homemade patties and salad in a fresh bakery bun.  
(Salad lettuce, carrot & tomato)

Crumbed Crispy Chicken or Beef strips \$  
with Roasted Vegetables or salad

### Lunches

Chicken Legs and Roasted Vegetables \$

Roast Beef and Roasted Vegetables \$

Chicken Soup \$  
Chicken and vegetable soup

Sandwiches & Rolls (G)  
Sandwiches available in hi-fiber white, rolls

	Sandwich	Roll
Vegemite	\$2.00	\$2.50
Cheese	\$3.80	\$4.50
Roast Chicken	\$3.80	\$4.50
Roast Beef	\$3.80	\$4.50
Egg	\$3.80	\$4.50
Salad	\$3.80	\$4.50
Extra fillings – cheese, beetroot etc		.50c

Toasted sandwiches (G)

1 Filling:	
\$3.80	\$4.20
2 Fillings	\$4.50
3 Fillings	

Fresh rolls brought from bakery daily.

### Traffic Light System

(G) Green Item - Healthy  
(A) Amber Item - Occasional Food